

## Anglorand's Morning Note - 13 Jul 17

### The Day Ahead

Upcoming Results (Confirmed)		Period End	Period Type	Status
20 Jul 17	VOD - Vodacom	30 Jun 17	Q1	Confirmed
24 Jul 17	AMS - Anglo American	30 Jun 17	S1	Confirmed
25 Jul 17	KIO - Kumba Iron	30 Jun 17	S1	Confirmed
26 Jul 17	HMN - Hammerson	30 Jun 17	S1	Confirmed
26 Jul 17	AFE - Aeci	30 Jun 17	S1	Confirmed
27 Jul 17	ITU - Intu Properties	30 Jun 17	S1	Confirmed
27 Jul 17	BTI - British American	30 Jun 17	S1	Confirmed
27 Jul 17	ANH - Anheuser-Busch Inbev	30 Jun 17	S1	Confirmed
27 Jul 17	AGL - Anglo American	30 Jun 17	S1	Confirmed
28 Jul 17	L2D - Liberty Two	30 Jun 17	S1	Confirmed
31 Jul 17	HLM - Hulamin	30 Jun 17	S1	Confirmed
01 Aug 17	RBP - Royal Bafokeng	30 Jun 17	S1	Confirmed

Economic Calendar	Name	Period	Estimate*	Previous
13 Jul 17 11:30	SA Mining Production y/y	May	1.0	(1.6)
13 Jul 17 05:20	CH Exports y/y	Jun	8.9	8.7
13 Jul 17 05:22	CH Imports y/y	Jun	14.5	14.8
13 Jul 17 14:30	US Initial Jobless Claims	Jul 8	245.0	248.0

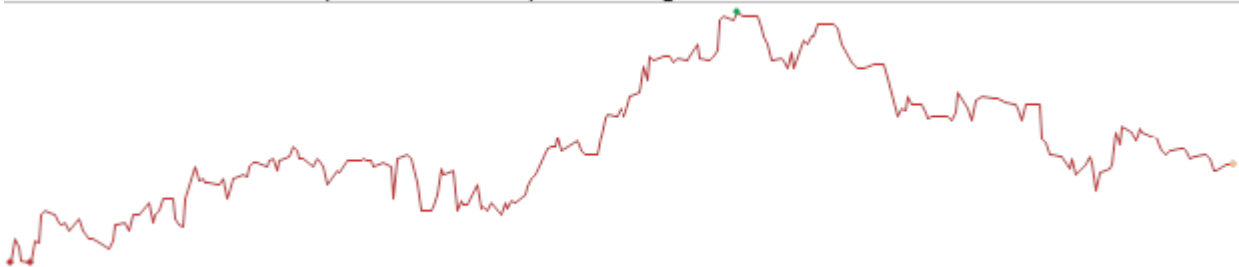
\*Bloomberg's consensus estimate

### JSE Wrap

The JSE's All Share index gained 1.01% on Wednesday on value traded of R16.2bn.

- Gainers outnumbered losers in the All Share by 109 to 47
- Foreigners bought net R0.49bn worth of JSE shares and bought net R1.11bn of SA bonds
- 52w highs: MSP 2490c
- 52w lows: PFG 12810c, SUI 5060c
- Overbought: EQU, HLM, FFB, NEP, MSP, BIL, MIX, VOD, AXL, TWR
- Oversold: SUI, WHL, SUR, SHG, APF, FBR, PPC, KAP, ARL, MPT

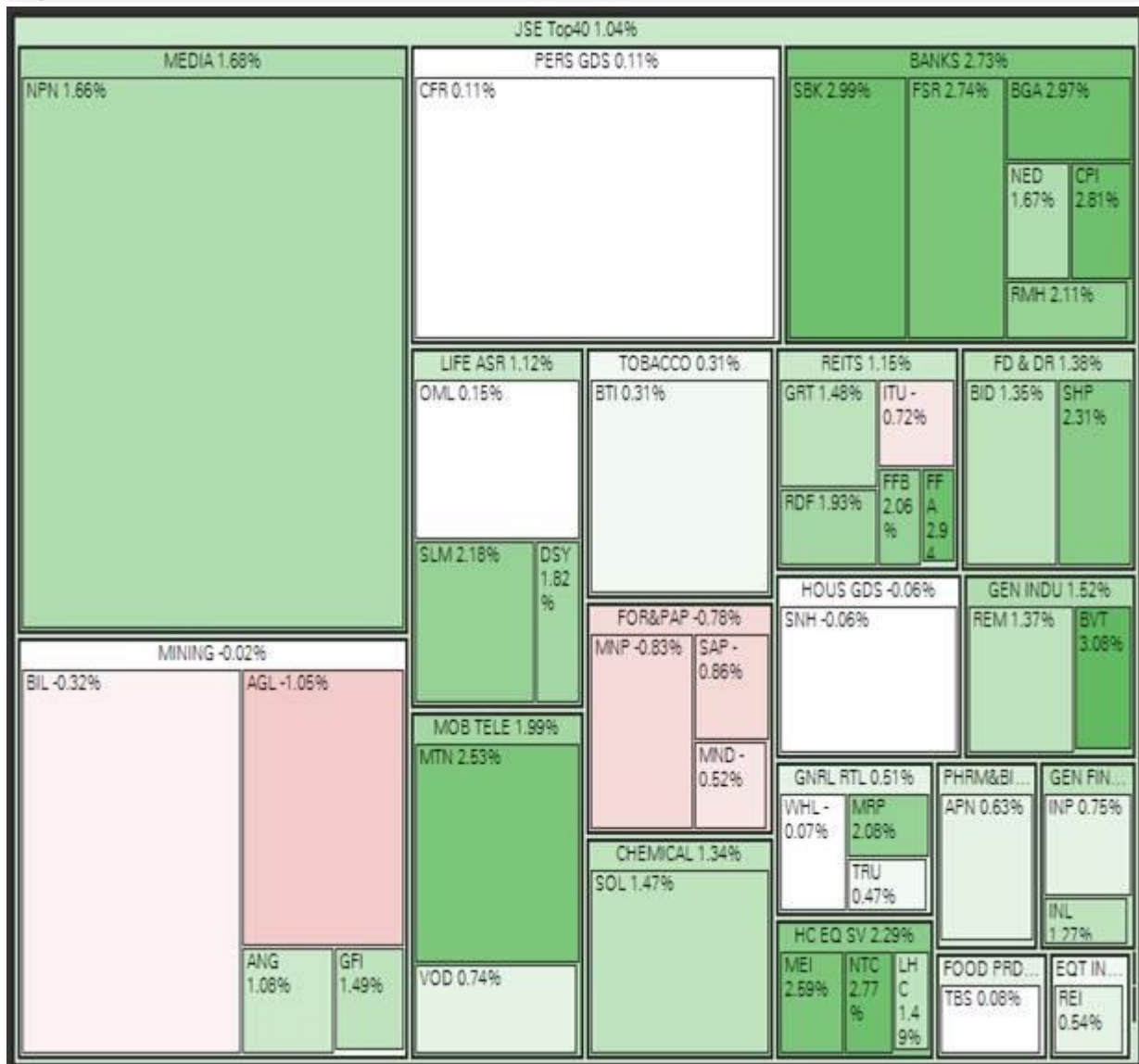
### Featured Chart: Rebasis (REB, 1139 cents) - 52w range



52w low: 1016 cents | 52w high: 1330 cents

The stock continues to trade lower and could retest 2017 lows

Indices	Last Close	1D Δ	1D %Δ	Rel Val*	1M %Δ	YTD %Δ	1Yr %Δ
All Share	52 905.98	529.60	1.01%	0.7 x	2.48%	4.45%	0.17%
Top40	46 674.35	481.72	1.04%	0.8 x	3.11%	6.31%	0.83%



Resources	32 194.87	-6.49	-0.02%	0.6 x	6.29%	0.27%	0.06%
Gold Miners	1 285.80	18.12	1.43%	0.7 x	-2.89%	-5.62%	-52.87%
Platinum Miners	17.76	0.24	1.37%	0.7 x	-4.05%	-9.89%	-32.57%
Industrials	71 739.35	812.88	1.15%	0.7 x	2.42%	11.60%	1.35%
Financials	7 285.97	193.96	2.73%	0.8 x	1.78%	-6.04%	9.88%
Banks	14 713.24	268.94	1.86%	0.8 x	1.45%	-2.42%	-0.19%
SAVI Volatility	16.09	0.07	0.44%		12.60%	-22.08%	-27.29%

## Company News (Volume movers)

**DAW - Distribution & Warehouse**  
5.56% to 95 on rel vol. of 0.4x

Updated t/statement for yr end 31 Mar 17: EPS 15% better than (-318.3c) & HEPS will be 267% lower at 240.5c vs 65.6c

**LAB - Labat Africa Ltd**  
2.50% to 41 on rel vol. of 11.5x

Voluntary announcement: Acquires a 55% in Kufika Transport and withdraws a cautionary

Director Dealings			Name	No Shares	Price	% Shares	Value (Rm)
10 Jul	Buy	MAP	Diedloff, Manley	11 000 000	ZAR 1.00	9.09%	11.00
06 Jul	Buy	ENX	Associate	91 158	ZAR 16.10	0.05%	1.47
07 Jul	Buy	ENX	Associate	68 658	ZAR 16.50	0.04%	1.13
05 Jul	Buy	ENX	Associate	50 960	ZAR 16.10	0.03%	0.82
07 Jul	Buy	THA	Djakouris, Antonios	43 250	GBP 0.84	0.02%	0.62
11 Jul	Buy	MAP	Diedloff, Manley	570 150	ZAR 1.00	0.47%	0.57
10 Jul	Sell	NPN	Pacak, Stephan J Z	15 000	ZAR 25.25	0.00%	0.38
10 Jul	Buy	ENX	Associate	15 539	ZAR 16.47	0.01%	0.26
10 Jul	Buy	TTO	Geyser, W	57 790	ZAR 4.30	0.01%	0.25
05 Jul	Sell	IVT	Director of a Subsidiary	867	ZAR 56.00	0.00%	0.05

\*Only includes the most significant cash transactions from the last week

Dividends	Name	LDT	Ex Date	Pay Date	Amount
APF	Accelerate Property	11 Jul 17	12 Jul 17	17 Jul 17	ZARc 28.80
ECSP1	Ecsponent Pref 1	11 Jul 17	12 Jul 17	17 Jul 17	ZARc 79.45
ECSP10	Ecsponent Pref 10	11 Jul 17	12 Jul 17	17 Jul 17	ZARc 79.45
ECSP12	Ecsponent Pref 12	11 Jul 17	12 Jul 17	17 Jul 17	ZARc 115.21
ECSP13	Ecsponent Pref 13	11 Jul 17	12 Jul 17	17 Jul 17	ZARc 79.45
ECSP15	Ecsponent Pref 15	11 Jul 17	12 Jul 17	17 Jul 17	ZARc 115.21
ECSP18	Ecsponent Pref 18	11 Jul 17	12 Jul 17	17 Jul 17	ZARc 115.21
ECSP21	Ecsponent Pref 21	11 Jul 17	12 Jul 17	17 Jul 17	ZARc 115.21
ECSP3	Ecsponent Pref 3	11 Jul 17	12 Jul 17	17 Jul 17	ZARc 115.21
ECSP4	Ecsponent Pref 4	11 Jul 17	12 Jul 17	17 Jul 17	ZARc 79.45
ECSP6	Ecsponent Pref 6	11 Jul 17	12 Jul 17	17 Jul 17	ZARc 115.21
ECSP7	Ecsponent Pref 7	11 Jul 17	12 Jul 17	17 Jul 17	ZARc 79.45
ECSP9	Ecsponent Pref 9	11 Jul 17	12 Jul 17	17 Jul 17	ZARc 115.21
FGL	Finbond Group Ltd	11 Jul 17	12 Jul 17	17 Jul 17	ZARc 7.28
OMN	Omnia	11 Jul 17	12 Jul 17	17 Jul 17	ZARc 180.00
SRE	Sirius Real Estate	11 Jul 17	12 Jul 17	18 Aug 17	EURc 1.53

## International

US	Last Close	1D Δ	1D %Δ	Rel Val*	1M %Δ	YTD %Δ	1Yr %Δ
S&P500	2 443.25	17.72	0.73%	0.9 x	0.12%	9.13%	13.51%
Sectors up 10, sectors down 0, biggest moves:							
			Tech	1.31%			
			Materials	1.14%			
			Utilities	0.85%			
Dow Jones	21 532.14	123.07	0.57%	0.9 x	0.95%	8.95%	17.20%
Nasdaq	6 261.17	67.87	1.10%	1.0 x	0.66%	16.31%	25.08%

<b>Asia &amp; Europe</b>	Last Close	1D Δ	1D %Δ	Rel Val*	1M %Δ	YTD %Δ	1Yr %Δ
ASX	4 045.37	40.80	1.02%	1.0 x	-1.41%	4.44%	12.13%
Nikkei 225*	20 098.01	-0.37	0.00%	0.8 x	1.00%	5.15%	23.82%
Hang Seng*	26 323.33	279.69	1.07%	1.2 x	1.82%	19.65%	23.45%
Shanghai*	3 211.51	13.97	0.44%	1.0 x	1.83%	3.48%	4.93%
Dax	12 626.58	189.56	1.52%	1.1 x	-1.08%	9.98%	27.15%
Cac 40	5 222.13	81.53	1.59%	1.0 x	-0.75%	7.40%	20.46%
FTSE 100	7 416.93	87.17	1.19%	1.0 x	-1.11%	3.84%	11.19%

\*Indicates market currently open

<b>Currencies</b>	Last Close	1D Δ	1D %Δ	1M %Δ	YTD %Δ	1Yr %Δ
USDZAR	13.2246	-0.03	0.20%	-3.47%	3.90%	9.51%
GBPZAR	17.058	-0.01	0.08%	-4.57%	-0.67%	11.62%
EURZAR	15.1231	0.00	-0.02%	-5.38%	-4.44%	6.20%
EURUSD	1.1436	0.00	0.21%	2.01%	8.74%	3.12%
USDJPY	113.05	-0.12	0.11%	-2.64%	3.46%	-7.57%

<b>Commodities</b>	Last Close	1D Δ	1D %Δ	1M %Δ	YTD %Δ	1Yr %Δ
Gold (USD)	1 223.03	2.54	0.21%	-3.44%	6.14%	-8.91%
Platinum (USD)	918.82	2.04	0.22%	-0.83%	1.70%	-16.25%
Palladium (USD)	865.41	0.79	0.09%	-2.22%	27.09%	34.22%
Silver (USD)	15.94	0.03	0.16%	-5.43%	0.10%	-21.68%
WTI Crude	45.53	0.04	0.09%	-2.44%	-19.98%	-9.32%
Iron Ore (USD)	64.05	-1.35	-2.06%	16.73%	-18.79%	7.86%
LME Copper (USD)	5 879.50	32.25	0.55%	2.38%	6.45%	21.23%

Source: Bloomberg, Anglorand Securities

Risk Disclaimer: Trading futures, forex, CFDs and equities involves a risk of loss. Please consider carefully if such trading is appropriate for you. Past performance is not indicative of future results. This note is compiled for information purposes only and does not constitute investment recommendations or advice.

**David Smyth, CFA**

Mobile +27 83 545 3986 / Direct +27 11 061 4213

Email [daves@anglorand.com](mailto:daves@anglorand.com)

Switchboard +27 11 061 4200 / Fax +27 86 668 4924

3rd Floor, 54 Melrose Boulevard, Melrose Arch, Melrose North, 2196

[www.anglorand.com](http://www.anglorand.com)

