

## Anglorand's Morning Note - 31 May 17

### The Day Ahead

Upcoming Results (Confirmed)		Period End	Period Type	Status
31 May 17	SPP - Spar	31 Mar 17	S1	Confirmed
05 Jun 17	TKG - Telkom	31 Mar 17	Y	Confirmed
21 Jun 17	SRE - Sirius Real Estate	31 Mar 17	Y	Confirmed
23 Jun 17	NPN - Naspers	31 Mar 17	Y	Confirmed

Economic Calendar		Name	Period	Estimate*	Previous
31 May 17 13:00	US	MBA Mortgage Applications	May 26	-	4.4
31 May 17 14:00	SA	Trade Balance	Apr	7.4	11.4
31 May 17 15:45	US	Chicago PMI	May	57.0	58.3
31 May 17 16:00	US	Pending Home Sales m/m	Apr	0.5	(0.8)

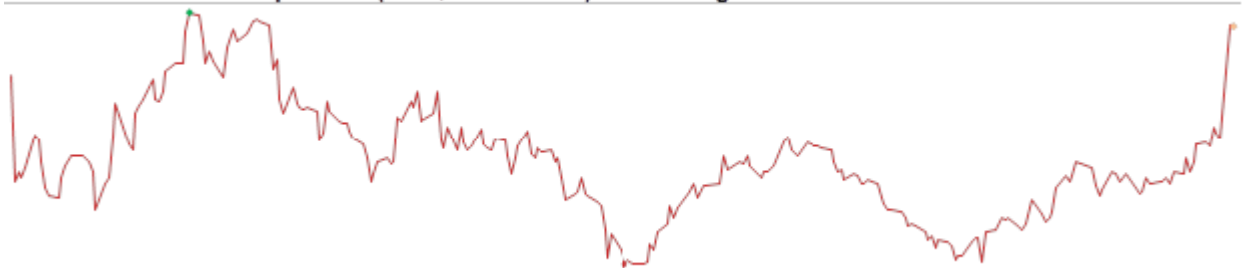
\*Bloomberg's consensus estimate

### JSE Wrap

The JSE's All Share index gained 0.40% on Tuesday on value traded of R14.0bn.

- Gainers outnumbered losers in the All Share by 100 to 57
- Foreigners bought net R0.19bn worth of JSE shares and bought net R1.03bn of SA bonds
- 52w highs: CLS 13894c, DCP 2899c
- 52w lows: NT1 11605c
- Overbought: DCP, NPN, GRF, VOD, STXIND, ARA, CML, APN, DST, FFB
- Oversold: RBP, DRD, SCP, CIL, PFG, LON, LEW, AVV, NHM, IMP

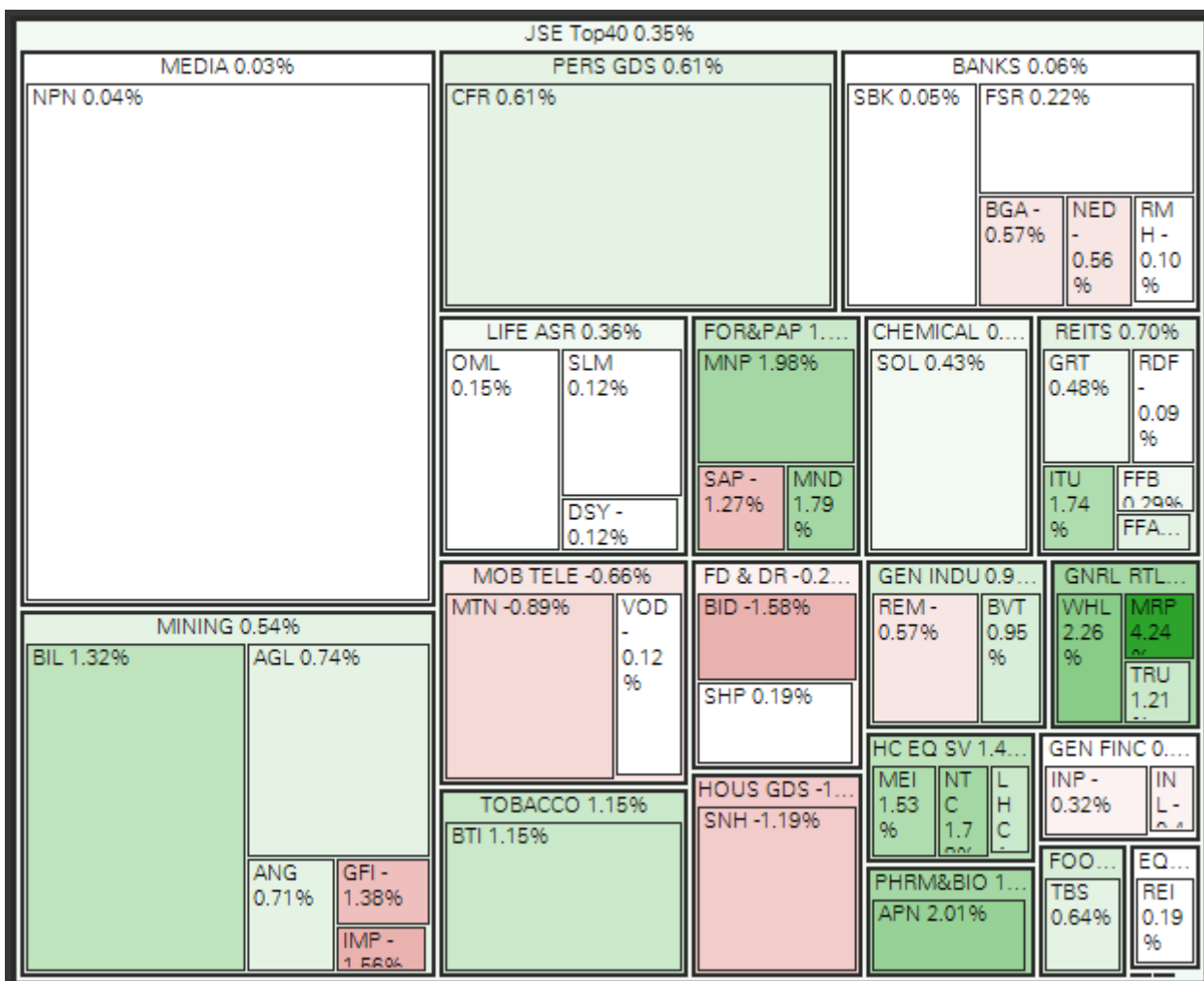
Featured Chart: Nampak Ltd (NPK, 2185 cents) - 52w range



52w low: 1581 cents | 52w high: 2220 cents

Nampak issued solid interims yesterday.

Indices	Last Close	1D Δ	1D %Δ	Rel Val*	1M %Δ	YTD %Δ	1Yr %Δ
All Share	54 158.04	213.82	0.40%	0.7 x	0.63%	6.92%	0.47%
Top40	47 699.35	165.85	0.35%	0.7 x	1.33%	8.65%	-0.57%



Resources	31 489.10	235.88	0.75%	0.7 x	-2.65%	-1.93%	0.44%
Gold Miners	1 357.45	-10.93	-0.80%	0.9 x	-0.25%	-0.36%	-28.97%
Platinum Miners	18.07	-0.38	-2.06%	1.1 x	-15.72%	-8.32%	-23.04%
Industrials	74 501.91	223.28	0.30%	0.7 x	2.91%	15.90%	0.71%
Financials	7 516.45	4.84	0.06%	0.4 x	1.75%	-3.07%	19.32%
Banks	15 057.54	20.52	0.14%	0.5 x	0.07%	-0.14%	-0.53%
SAVI Volatility	14.20	0.00	0.00%		-1.80%	-31.23%	-31.43%

## Company News (Volume movers)

<b>SPP - Spar</b> 1.02% to 17578 on rel vol. of 0.5x	Issued March interims this morning, with revenue ↑ 13.9% but HEPS ↓ 0.9% to 475.5 cents. Dividend ↓ 5.9% to 240 cents.
<b>NPK - Nampak Ltd</b> 15.00% to 2185 on rel vol. of 4.0x	March interims revealed HEPS improved 8% to 113.1 cents after its operating improved from 10.5% to 11.9%.
<b>MRP - Mr Price</b> 4.24% to 15239 on rel vol. of 3.7x	Has released FY17 results this morning, with diluted HEPS ↓ 10.4% y/y to 887.9 cents - first drop in 16 years.
<b>GRP - Greenbay Props</b> -1.52% to 194 on rel vol. of 4.9x	Raised R1.15bn yesterday in a bookbuild at 186 cents, issuing 620m new shares.

Director Dealings			Name	No Shares	Price	% Shares	Value (Rm)
29 May	Buy	TDH	Associate	1 000 000	ZAR 19.00	0.41%	19.00
26 May	Sell	EOH	Godlonton, Rob	114 543	ZAR 129.23	0.08%	14.80
29 May	Sell	BVT	Meijer, Hans Peter	65 168	ZAR 167.78	0.02%	10.93
24 May	Sell	AFT	van Heerden, A J	300 000	ZAR 29.50	0.21%	8.85
29 May	Sell	PET	Du Preez, Jan C	4 575 250	ZAR 1.55	0.79%	7.09
29 May	Buy	PET	Du Preez, Jan C	4 575 250	ZAR 1.55	0.79%	7.09
29 May	Buy	TDH	Associate	310 000	ZAR 19.00	0.13%	5.89
25 May	Buy	MTN	Mupita, Ralph	41 670	ZAR 119.82	0.00%	4.99
26 May	Buy	TDH	Associate	217 128	ZAR 18.77	0.09%	4.07
25 May	Buy	IPF	Hackner, Sam	215 220	ZAR 15.90	0.03%	3.42

\*Only includes the most significant cash transactions from the last week

Dividends	Name	LDT	Ex Date	Pay Date	Amount
DCP	Dis-Chem	30 May 17	31 May 17	05 Jun 17	ZARc 7.35
EQU	Equites Property	30 May 17	31 May 17	05 Jun 17	ZARc 55.93
ILU	Indluplace	30 May 17	31 May 17	05 Jun 17	ZARc 24.71
RBX	Raubex	30 May 17	31 May 17	05 Jun 17	ZARc 45.00
RDF	Redefine Property	30 May 17	31 May 17	05 Jun 17	ZARc 44.82

## International

US	Last Close	1D Δ	1D %Δ	Rel Val*	1M %Δ	YTD %Δ	1Yr %Δ
S&P500	2 412.91	-2.91	-0.12%	0.9 x	1.20%	7.78%	15.07%
Sectors up 4, sectors down 6, biggest moves:							
			Telecoms		1.42%		
			Energy		-1.31%		
			Financials		-0.77%		
Dow Jones	21 029.47	-50.81	-0.24%	0.8 x	0.42%	6.41%	18.23%
Nasdaq	6 203.19	-7.01	-0.11%	1.0 x	2.57%	15.23%	25.37%

<b>ASIA &amp; EU</b>	Last Close	1D Δ	1D %Δ	Rel Val*	1M %Δ	YTD %Δ	1Yr %Δ
ASX	4 119.58	-10.57	-0.26%	1.0 x	3.96%	6.36%	20.11%
Nikkei 225*	19 620.60	-57.25	-0.29%	0.7 x	2.21%	2.65%	13.84%
Hang Seng*	25 690.07	-11.56	-0.04%	0.8 x	4.37%	16.77%	24.53%
Shanghai*	3 116.98	6.93	0.22%	0.8 x	-1.19%	0.43%	10.49%
Dax	12 598.68	-30.27	-0.24%	0.8 x	1.29%	9.73%	22.76%
Cac 40	5 305.94	-26.53	-0.50%	0.9 x	0.73%	9.12%	17.76%
FTSE 100	7 526.51	-21.12	-0.28%	1.0 x	4.48%	5.37%	20.80%

\*Indicates market currently open

<b>Currencies</b>	Last Close	1D Δ	1D %Δ	1M %Δ	YTD %Δ	1Yr %Δ
USDZAR	13.1068	-0.02	0.19%	2.33%	4.83%	19.85%
GBPZAR	16.7848	-0.10	0.60%	2.96%	0.95%	35.54%
EURZAR	14.644	-0.04	0.29%	-0.15%	-1.31%	19.41%
EURUSD	1.1173	0.00	-0.12%	2.51%	6.24%	0.37%
USDJPY	110.94	0.09	-0.08%	0.81%	5.43%	-0.19%

<b>Commodities</b>	Last Close	1D Δ	1D %Δ	1M %Δ	YTD %Δ	1Yr %Δ
Gold (USD)	1 261.30	-1.86	-0.15%	-0.55%	9.46%	3.78%
Platinum (USD)	943.14	3.62	0.38%	-0.25%	4.39%	-3.70%
Palladium (USD)	807.16	-0.32	-0.04%	-1.17%	18.53%	47.54%
Silver (USD)	17.29	-0.12	-0.67%	2.57%	8.55%	8.09%
WTI Crude	49.38	-0.28	-0.56%	-0.48%	-13.00%	-4.25%
Iron Ore (USD)	58.50	0.00	0.00%	-14.97%	-25.83%	16.37%
LME Copper (USD)	5 633.25	-4.75	-0.08%	-1.35%	2.00%	19.34%

**David Smyth, CFA**

Mobile +27 83 545 3986 / Direct +27 11 061 4213

Email [daves@anglorand.com](mailto:daves@anglorand.com)

Switchboard +27 11 061 4200 / Fax +27 86 668 4924

3rd Floor, 54 Melrose Boulevard, Melrose Arch,

Melrose North, 2196

[www.anglorand.com](http://www.anglorand.com)

