

Anglorand's Morning Note - 09 May 17

The Day Ahead

Upcoming Results (Confirmed)		Period End	Period Type	Status
10 May 17	DTC - Datatec	28 Feb 17	Y	Confirmed
12 May 17	NEP - NEPI	31 Mar 17	Q1	Confirmed
12 May 17	LHC - Life	31 Mar 17	S1	Confirmed
15 May 17	VOD - Vodacom	31 Mar 17	Y	Confirmed
15 May 17	SAP - Sappi	31 Mar 17	S1	Confirmed
15 May 17	NTC - Netcare	31 Mar 17	S1	Confirmed
15 May 17	GTC - Globe Trade Centre	31 Mar 17	Q1	Confirmed

Economic Calendar	Name	Period	Estimate*	Previous
09 May 17 12:00	US NFIB Small Business Optimism	Apr	104.0	104.7
09 May 17 16:00	US JOLTS Jop Openings	Mar	5 725.0	5 743.0
09 May 17 16:00	US Wholesale Inventories m/m	Mar F	(0.1)	(0.1)

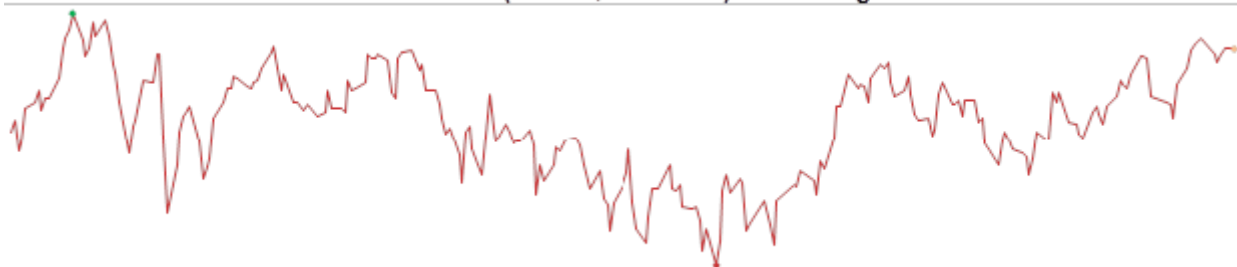
*Bloomberg's consensus estimate

JSE Wrap

The JSE's All Share index gained 0.22% on Monday on value traded of R15.1bn.

- Gainers outnumbered losers in the All Share by 105 to 52
- Foreigners sold a net R0.62bn worth of JSE shares and sold a net R1.12bn of SA bonds
- 52w highs: NPN 260810c, MND 35796c, MNP 35847c
- 52w lows: OCE 9051c, CVH 801c
- Overbought: GRP, NPN, SPG, STXIND, DBXEU, MPT, SRE, ANH, MNP, CFR
- Oversold: ADR, OCE, ENX, GND, CIL, AEG, CVH, PPC, LEW, KIO

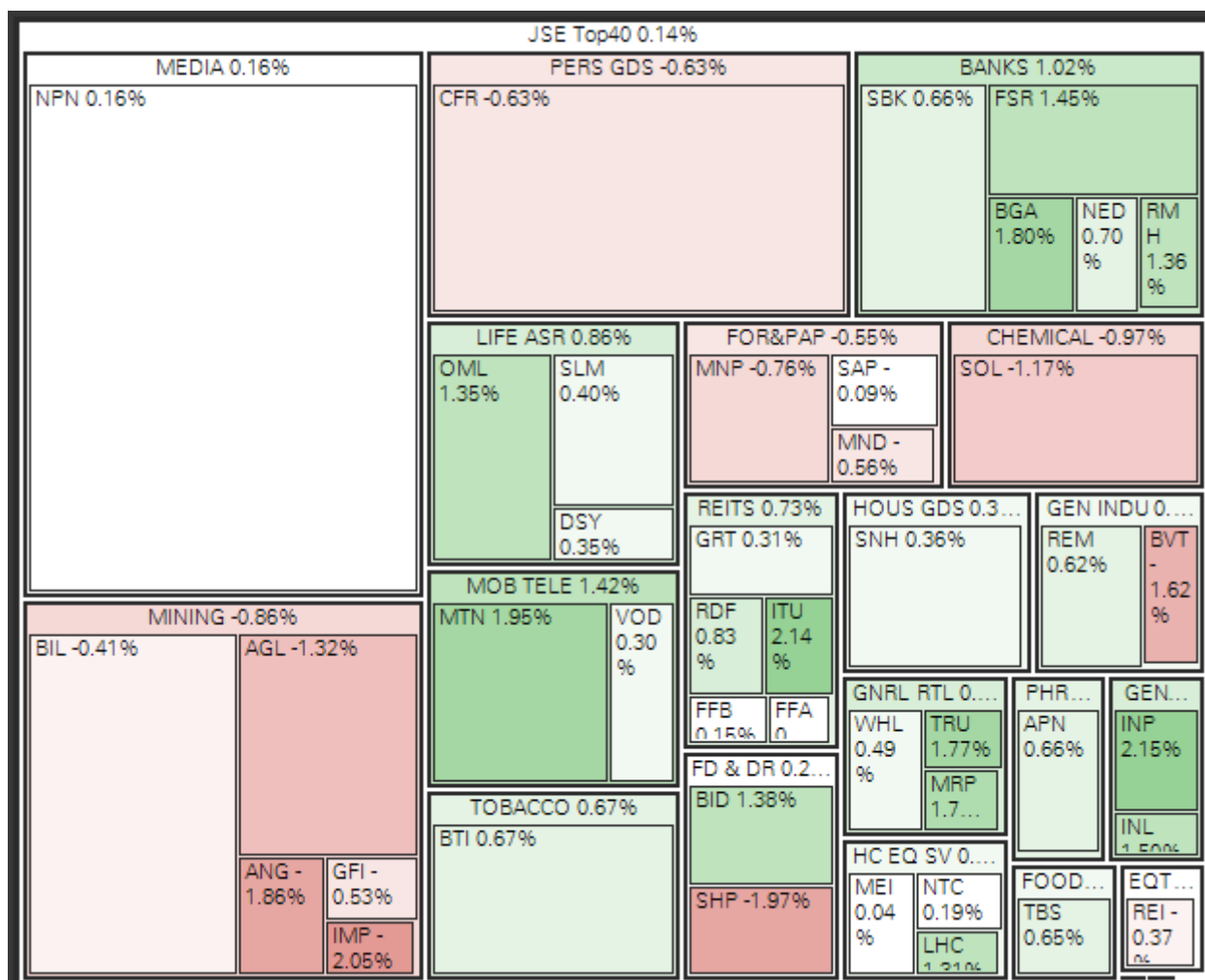
Featured Chart: Ftse/Jse Africa All Shr (JALSH, 53696.37) - 52w range



52w low: 48935.90 | 52w high: 54474.09

A mere R15.1bn changed hands on the JSE yesterday.

Indices	Last Close	1D Δ	1D %Δ	Rel Val*	1M %Δ	YTD %Δ	1Yr %Δ
All Share	53 696.37	117.36	0.22%	0.7 x	1.60%	6.01%	4.57%
Top40	47 076.82	67.03	0.14%	0.7 x	2.15%	7.23%	4.30%



Resources	31 496.13	-274.51	-0.86%	0.6 x	-7.83%	-1.91%	7.34%
Gold Miners	1 328.60	-20.16	-1.49%	0.5 x	-17.27%	-2.48%	-36.87%
Platinum Miners	20.10	-0.29	-1.42%	0.8 x	-16.84%	1.98%	-15.62%
Industrials	73 124.07	194.27	0.27%	0.7 x	4.98%	13.75%	4.90%
Financials	7 296.56	73.88	1.02%	0.6 x	6.56%	-5.91%	20.15%
Banks	14 986.10	141.53	0.95%	0.6 x	5.32%	-0.61%	2.44%
SAVI Volatility	14.51	0.05	0.35%		-10.32%	-29.73%	-36.69%

Company News (Volume movers)

RDF - Redefine Properties Ltd 0.83% to 1095 on rel vol. of 0.5x	Shares gained after it released its February interims, with distribution growth of 7.5%.
RBX - Raubex 3.96% to 2495 on rel vol. of 0.5x	Raubex advanced despite reporting a 14.0% drop in HEPS for FY17. Its order book fell slightly to R8.0bn.
TSH - Tsogo Sun 1.34% to 2490 on rel vol. of 0.2x	Released its FY17 trading statement, saying it expects adjusted HEPS growth of 5% to 7%.
HAR - Harmony Gold Mining Co -2.64% to 2882 on rel vol. of 0.6x	Operational update for March quarter revealed a 7% q/q drop in production, keeping it on course to meet full year guidance.

Director Dealings			Name	No Shares	Price	% Shares	Value (Rm)
02 May	Sell	BAU	Associate	10 000 000	ZAR 0.75	2.64%	7.50
02 May	Sell	BAU	Associate	10 000 000	ZAR 0.75	2.64%	7.50
02 May	Sell	DSY	Kallner, Hylton D	38 000	ZAR 133.50	0.01%	5.07
03 May	Sell	DSY	Director of a Subsidiary	7 500	ZAR 135.00	0.00%	1.01
02 May	Sell	DSY	Director of a Subsidiary	7 500	ZAR 133.94	0.00%	1.00
02 May	Sell	IWE	Associate	296 985	ZAR 0.81	0.06%	0.24
02 May	Sell	HLM	Company Secretary	29 150	ZAR 6.95	0.01%	0.20
02 May	Sell	HLM	Company Secretary	14 251	ZAR 6.95	0.00%	0.10
04 May	Sell	SHP	Director of a Subsidiary	20 000	ZAR 2.10	0.00%	0.04
02 May	Sell	IWE	Associate	3 015	ZAR 0.85	0.00%	0.00

*Only includes the most significant cash transactions from the last week

Dividends	Name	LDT	Ex Date	Pay Date	Amount
ALP	Atlantic Leaf Props	09 May 17	10 May 17	15 May 17	GBPp 4.30
ECSP1	Ecsponent Pref 1	09 May 17	10 May 17	15 May 17	ZARc 79.45
ECSP10	Ecsponent Pref 10	09 May 17	10 May 17	15 May 17	ZARc 79.45
ECSP12	Ecsponent Pref 12	09 May 17	10 May 17	15 May 17	ZARc 115.21
ECSP15	Ecsponent Pref 15	09 May 17	10 May 17	15 May 17	ZARc 115.21
ECSP18	Ecsponent Pref 18	09 May 17	10 May 17	15 May 17	ZARc 115.21
ECSP3	Ecsponent Pref 3	09 May 17	10 May 17	15 May 17	ZARc 115.21
ECSP4	Ecsponent Pref 4	09 May 17	10 May 17	15 May 17	ZARc 79.45
ECSP6	Ecsponent Pref 6	09 May 17	10 May 17	15 May 17	ZARc 115.21
ECSP7	Ecsponent Pref 7	09 May 17	10 May 17	15 May 17	ZARc 79.45
ECSP9	Ecsponent Pref 9	09 May 17	10 May 17	15 May 17	ZARc 115.21
KST	Psg Konsult Ltd	09 May 17	10 May 17	15 May 17	ZARc 10.20
NFP	New Frontier Properties	09 May 17	10 May 17	15 May 17	GBPp 3.60
PSG	Psg Group Ltd	09 May 17	10 May 17	15 May 17	ZARc 250.00

International

US	Last Close	1D Δ	1D %Δ	Rel Val*	1M %Δ	YTD %Δ	1Yr %Δ
S&P500	2 399.38	0.09	0.00%	1.0 x	1.86%	7.17%	16.55%
Sectors up 4, sectors down 6, biggest moves:							
	Materials		-0.90%				
	Energy		0.71%				
	Health Care		-0.57%				
Dow Jones	21 012.28	5.34	0.03%	1.0 x	1.72%	6.32%	18.67%
Nasdaq	6 102.66	1.90	0.03%	1.1 x	3.83%	13.37%	28.47%
ASIA & EU	Last Close	1D Δ	1D %Δ	Rel Val*	1M %Δ	YTD %Δ	1Yr %Δ
ASX	4 009.57	2.73	0.07%	1.0 x	-0.02%	3.52%	19.30%
Nikkei 225*	19 885.49	-10.21	-0.05%	1.4 x	6.54%	4.03%	22.63%
Hang Seng*	24 695.82	117.91	0.48%	1.0 x	1.77%	12.25%	22.52%
Shanghai*	3 077.47	-1.15	-0.04%	0.9 x	-6.36%	-0.84%	8.66%
Dax	12 694.55	-22.34	-0.18%	1.1 x	3.84%	10.57%	27.19%
Cac 40	5 382.95	-49.45	-0.91%	1.3 x	4.82%	10.71%	24.52%
FTSE 100	7 300.86	3.43	0.05%	0.9 x	-0.66%	2.21%	19.40%

*Indicates market currently open

Currencies	Last Close	1D Δ	1D %Δ	1M %Δ	YTD %Δ	1Yr %Δ
USDZAR	13.648	0.03	-0.19%	2.23%	0.67%	11.13%
GBPZAR	17.6716	0.04	-0.24%	-1.97%	-4.12%	23.74%
EURZAR	14.909	0.03	-0.20%	-0.84%	-3.07%	15.76%
EURUSD	1.0925	0.00	0.01%	3.10%	3.88%	-4.02%
USDJPY	113.33	0.07	-0.06%	-2.11%	3.20%	-4.42%
Commodities	Last Close	1D Δ	1D %Δ	1M %Δ	YTD %Δ	1Yr %Δ
Gold (USD)	1 226.32	0.05	0.00%	-2.24%	6.43%	-2.98%
Platinum (USD)	915.01	-3.53	-0.38%	-4.15%	1.27%	-12.43%
Palladium (USD)	810.44	-0.55	-0.07%	2.63%	19.01%	38.75%
Silver (USD)	16.27	0.04	0.26%	-9.36%	2.17%	-4.44%
WTI Crude	46.46	0.03	0.06%	-11.74%	-17.76%	-0.79%
Iron Ore (USD)	60.15	-1.58	-2.56%	-20.28%	-23.74%	3.19%
LME Copper (USD)	5 461.75	-101.25	-1.82%	-5.81%	-1.11%	13.19%

David Smyth, CFA

Mobile +27 83 545 3986 / Direct +27 11 061 4213

Email daves@anglorand.com

Switchboard +27 11 061 4200 / Fax +27 86 668 4924

3rd Floor, 54 Melrose Boulevard, Melrose Arch,

Melrose North, 2196

www.anglorand.com



A Multi-National Financial Services Provider, subsidiary of Ningbo Construction, China Listed Company, Stock Code 601789

