

Anglorand's Morning Note - 03 May 17

The Day Ahead

Upcoming Results (Confirmed)

		Period End	Period Type	Status
04 May 17	NT1 - Net 1 Ueps	31 Mar 17	Q3	Confirmed
10 May 17	DTC - Datatec	28 Feb 17	Y	Confirmed
12 May 17	NEP - NEPI	31 Mar 17	Q1	Confirmed
12 May 17	LHC - Life	31 Mar 17	S1	Confirmed
15 May 17	VOD - Vodacom	31 Mar 17	Y	Confirmed
15 May 17	SAP - Sappi	31 Mar 17	S1	Confirmed
15 May 17	NTC - Netcare	31 Mar 17	S1	Confirmed

Economic Calendar

	Name	Period	Estimate*	Previous
03 May 17 13:00	US MBA Mortgage Applications	Apr 28	-	2.7
03 May 17 14:15	US ADP Employment Change	Apr	175.0	263.0
03 May 17 15:45	US Markit US Services PMI	Apr F	52.5	52.5
03 May 17 16:00	US ISM Non-Manufacturing PMI	Apr	55.8	55.2
03 May 17 20:00	US Fed Rate Decision (Lower)	May 3	0.8	0.8
03 May 17 20:00	US Fed Rate Decision (Upper)	May 3	1.0	1.0

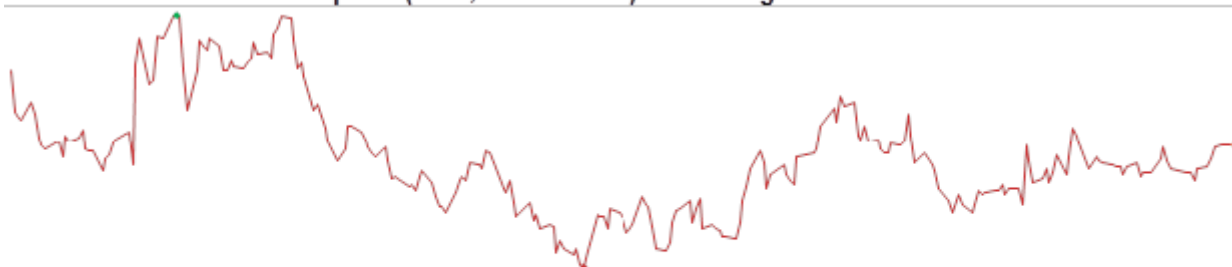
*Bloomberg's consensus estimate

JSE Wrap

The JSE's All Share index gained 0.18% on Tuesday on value traded of R22.8bn.

- Gainers outnumbered losers in the All Share by 96 to 62
- Foreigners sold a net R2.33bn worth of JSE shares and sold a net R0.21bn of SA bonds
- 52w highs: NPN 258100c, SAP 10294c, KAP 977c, MND 35044c, SHP 21450c, MNP 35084c
- 52w lows: DST 13101c
- Overbought: MEI, MND, MNP, NPN, STXIND, SAP, DCP, BAT, KAP, STXSWX
- Oversold: GND, GRF, ADR, AEG, CIL, ENX, DRD, ABSF, CVH, SCP

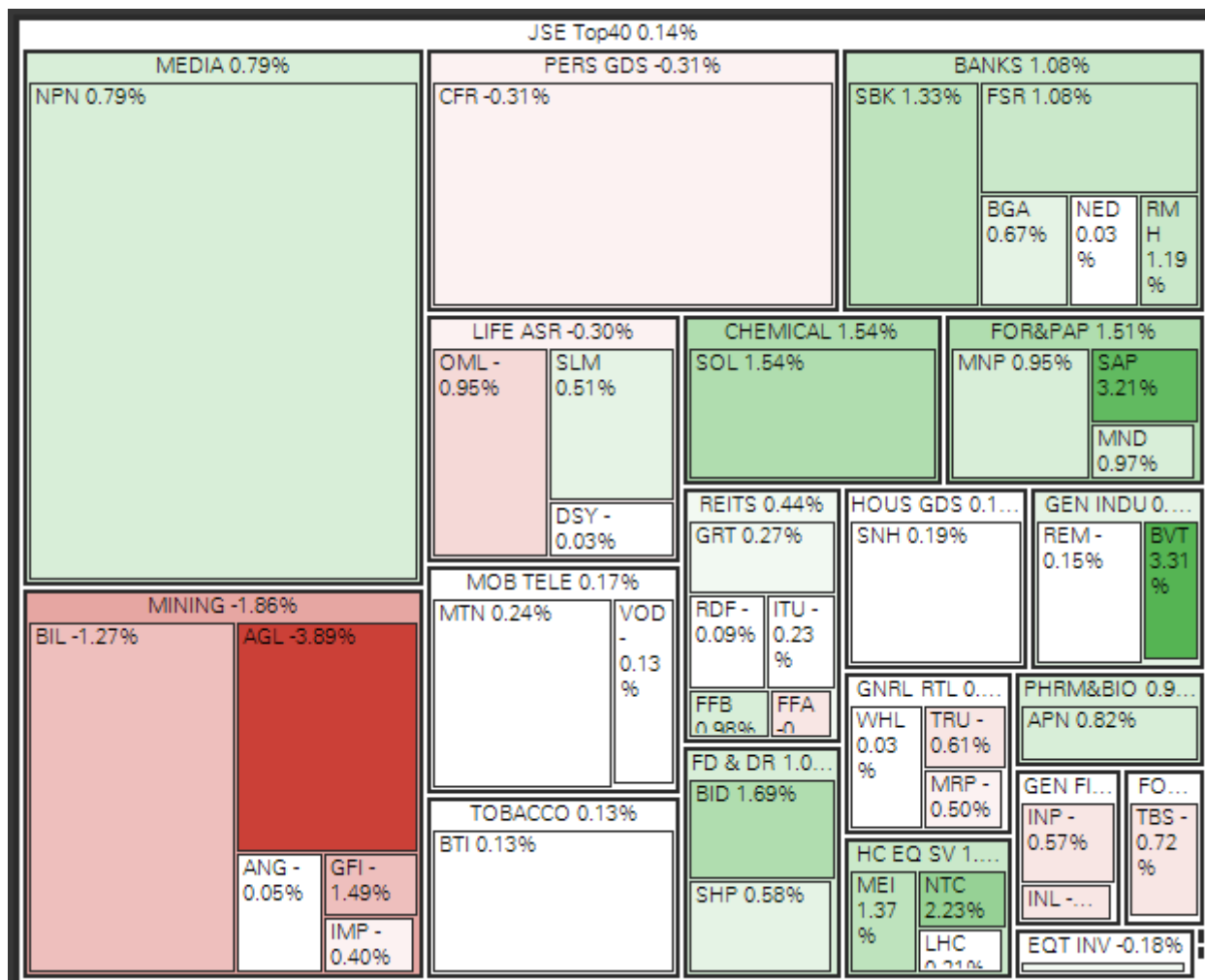
Featured Chart: Mtn Group Ltd (MTN, 12680 cents) - 52w range



52w low: 10700 cents | 52w high: 14803 cents

MTN has issued a quarterly update this morning.

Indices	Last Close	1D Δ	1D %Δ	Rel Val*	1M %Δ	YTD %Δ	1Yr %Δ
All Share	53 915.64	98.33	0.18%	1.1 x	2.78%	6.44%	3.86%
Top40	47 138.85	67.12	0.14%	1.1 x	3.46%	7.37%	3.49%



Resources	32 084.61	-262.77	-0.81%	1.1 x	-2.23%	-0.08%	4.70%
Gold Miners	1 345.61	-15.28	-1.12%	0.9 x	-6.27%	-1.23%	-36.78%
Platinum Miners	21.41	-0.03	-0.14%	0.7 x	-0.83%	8.63%	-19.90%
Industrials	72 693.51	298.67	0.41%	1.3 x	5.35%	13.08%	4.94%
Financials	7 466.55	79.43	1.08%	0.8 x	4.85%	-3.71%	17.91%
Banks	15 103.06	55.65	0.37%	0.8 x	3.62%	0.17%	0.74%
SAVI Volatility	14.55	0.09	0.62%		-12.98%	-29.54%	-30.75%

Company News (Volume movers)

SOL - Sasol Ltd

1.54% to 41633 on rel vol. of 1.2x

Lowered its FY17 synfuels sales forecast from 61 to 60m barrels, however chemicals business volumes recovered.

MTN - Mtn Group Ltd

0.24% to 12680 on rel vol. of 4.1x

Issued a March quarter update this morning, with group total revenue up 7.1% after data revenue grew 29.4% y/y.

Director Dealings			Name	No Shares	Price	% Shares	Value (Rm)
26 Apr	Sell	PSG	Associate	55 965	ZAR 252.67	0.02%	14.14
26 Apr	Sell	PSG	Associate	55 965	ZAR 252.67	0.02%	14.14
26 Apr	Sell	PSG	Holtzhausen, Johan A	55 964	ZAR 252.67	0.02%	14.14
28 Apr	Sell	AGL	Parker, John	62 696	GBP 11.07	0.00%	11.94
26 Apr	Sell	CPI	Fourie, Gerrie	4 000	ZAR 784.00	0.00%	3.14
28 Apr	Sell	PSG	Holtzhausen, Johan A	4 969	ZAR 251.42	0.00%	1.25
28 Apr	Sell	PSG	Associate	4 968	ZAR 251.42	0.00%	1.25
26 Apr	Sell	PSG	Associate	4 968	ZAR 251.42	0.00%	1.25

*Only includes the most significant cash transactions from the last week

Dividends	Name	LDT	Ex Date	Pay Date	Amount
ANH	AB InBev	02 May 17	03 May 17	08 May 17	EURc 200.00
BAWP	Barloworld Pref	02 May 17	03 May 17	08 May 17	ZARc 6.00
ZED	Zeder Investments Ltd	02 May 17	03 May 17	08 May 17	ZARc 11.00

International

US	Last Close	1D Δ	1D %Δ	Rel Val*	1M %Δ	YTD %Δ	1Yr %Δ
S&P500	2 391.17	2.84	0.12%	1.0 x	1.37%	6.80%	15.89%

Sectors up 6, sectors down 4, biggest moves:

Cons Staples	-0.55%
Industrials	0.54%
Energy	-0.50%

Dow Jones	20 949.89	36.43	0.17%	1.0 x	1.45%	6.01%	18.02%
Nasdaq	6 095.37	3.76	0.06%	1.1 x	3.40%	13.23%	27.97%

ASIA & EU	Last Close	1D Δ	1D %Δ	Rel Val*	1M %Δ	YTD %Δ	1Yr %Δ
ASX	3 990.16	27.67	0.70%	1.1 x	0.48%	3.02%	17.57%
Nikkei 225	19 445.70	135.18	0.70%	0.9 x	2.44%	1.73%	20.43%
Hang Seng	24 696.13	81.00	0.33%	1.0 x	1.79%	12.25%	19.44%
Shanghai*	3 133.62	-10.09	-0.32%	0.8 x	-2.76%	0.97%	4.71%
Dax	12 507.90	69.89	0.56%	1.1 x	2.05%	8.94%	26.00%
Cac 40	5 304.15	36.82	0.70%	1.1 x	4.29%	9.09%	21.32%
FTSE 100	7 250.05	46.11	0.64%	1.1 x	-0.45%	1.50%	17.21%

*Indicates market currently open

Currencies	Last Close	1D Δ	1D %Δ	1M %Δ	YTD %Δ	1Yr %Δ
USDZAR	13.3286	-0.02	0.12%	2.69%	3.09%	9.84%
GBPZAR	17.2019	-0.07	0.43%	-0.67%	-1.50%	23.70%
EURZAR	14.5599	-0.02	0.17%	0.33%	-0.74%	15.58%
EURUSD	1.0927	0.00	-0.03%	2.41%	3.90%	-4.95%
USDJPY	112.09	0.10	-0.09%	-1.06%	4.34%	-4.90%

Commodities	Last Close	1D Δ	1D %Δ	1M %Δ	YTD %Δ	1Yr %Δ
Gold (USD)	1 255.61	0.51	0.04%	0.18%	8.97%	-2.40%
Platinum (USD)	925.62	-1.56	-0.17%	-3.32%	2.45%	-13.14%
Palladium (USD)	820.73	2.04	0.25%	2.17%	20.53%	35.24%
Silver (USD)	16.86	0.03	0.17%	-7.71%	5.86%	-3.24%
WTI Crude	47.95	0.29	0.61%	-5.44%	-15.12%	1.50%
Iron Ore (USD)	68.72	-0.08	-0.12%	-14.52%	-12.87%	3.74%
LME Copper (USD)	5 770.50	60.00	1.05%	-0.78%	4.48%	13.95%

David Smyth, CFA

Mobile +27 83 545 3986 / Direct +27 11 061 4213

Email daves@anglorand.com

Switchboard +27 11 061 4200 / Fax +27 86 668 4924

3rd Floor, 54 Melrose Boulevard, Melrose Arch,

Melrose North, 2196

www.anglorand.com

